



cleaning
systems
for liquids



Coolant treatment

Why is coolant treatment so important?

Foreign oils and ultra-fine particles reduce the effect of MWF emulsions and other media. Shorter service lives and the spread of **microorganisms** are the consequences of this. Thus, it is not only a question of **high costs** for cooling lubricant and tools, but also the **health and safety** of the employees.

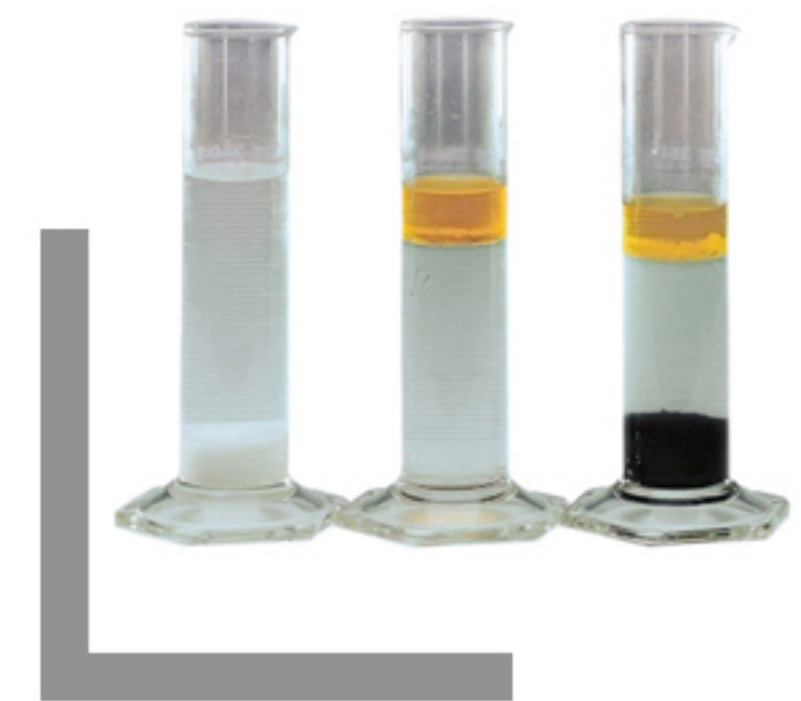
Separating oils and ultra-fine particles is the first step towards **hygienic and cost-effective production**. Even visually clean emulsions contain components that cannot be removed by conventional filtration methods.

MKR has the solutions here for regular bypass maintenance without machine downtime.



The advantages at a glance:

- Maintenance in bypass mode (no machine downtimes)
- Reduction of costs for cooling lubricant change and disposal
- Increase in tool life
- Promotion of work safety / health protection



Fields of application:

- Cooling lubricants
- Cutting oils
- Hydraulic oils
- Pre-treatment baths
- Washing baths
- Degreasing baths



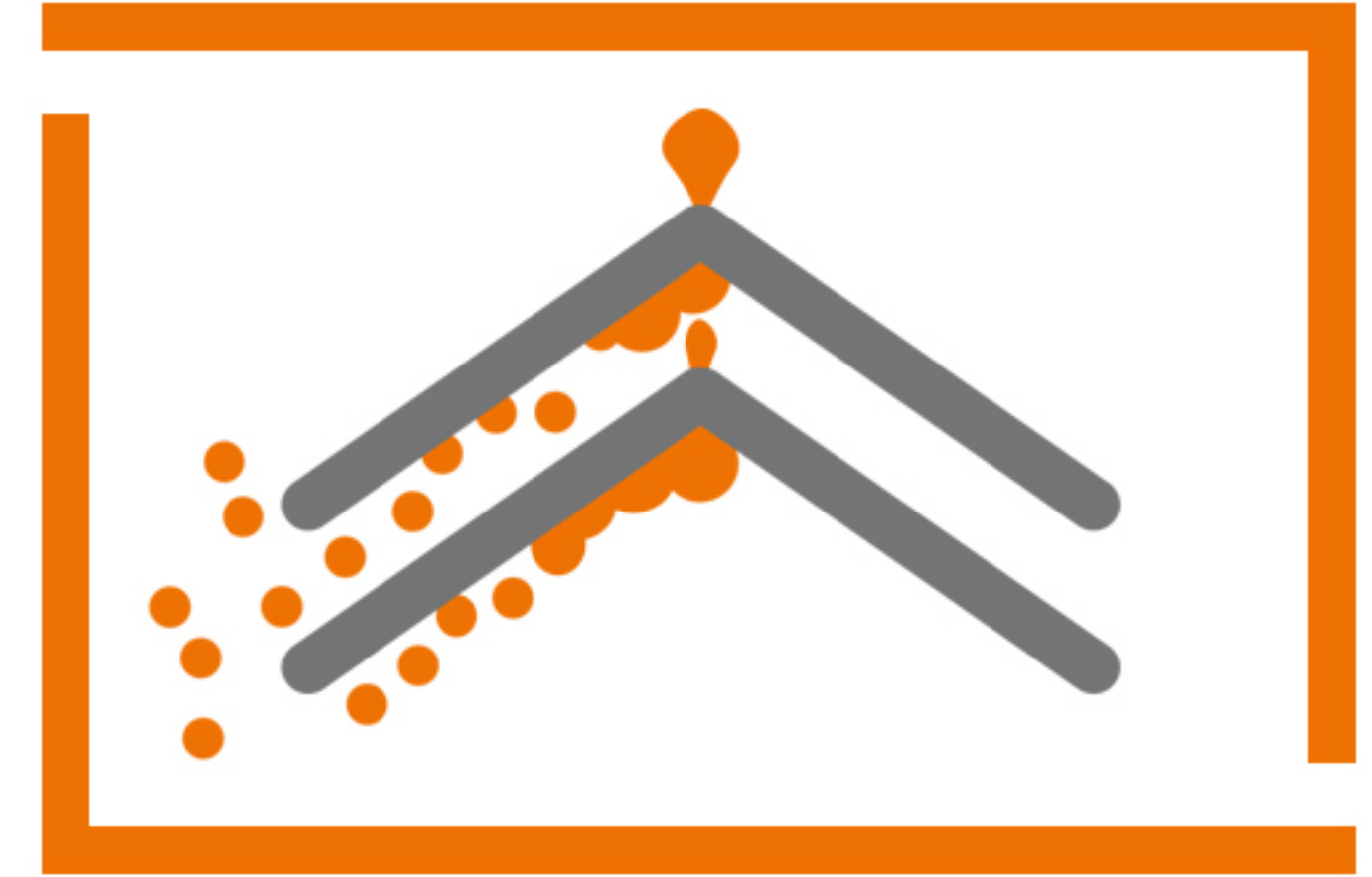
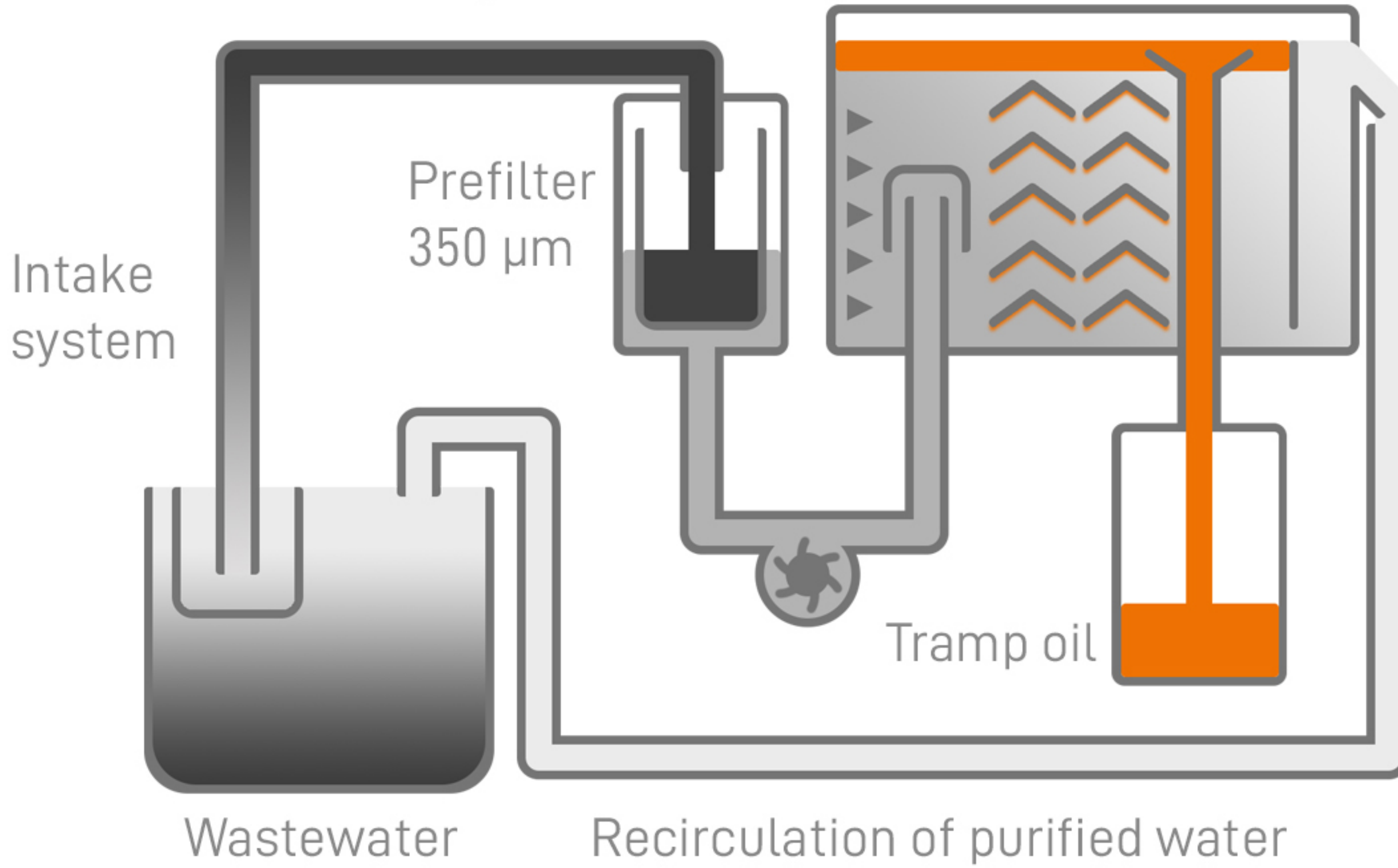
	Tramp Oil Separator TB / TM	Disk Stack Centrifuges OTC / OSE	Drum Centrifuges T 700 / 710
Tramp oil	● ● ●	● ●	●
Ultra-fine particles*		● ● ●	● ●
Sludge		●	● ● ●

*up to 2 µm

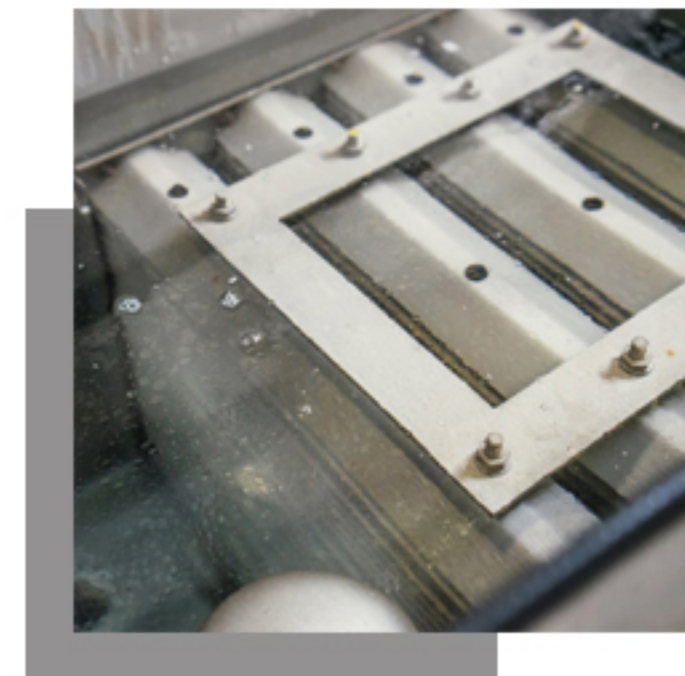
Tramp Oil Separator

When oil acts like sand in operation: Tramp oil separators from MKR for tramp oil separation with and without UV disinfection. **Keeps coolants, machines and employees fit.**

Functionality:



Coalescence



TB 250 UNIT VALUE

Dimensions

Length	mm	1000
Width	mm	560
Height	mm	1000

Suction capacity	l/min	4 - 7,5
Suction height	m	3
Temperature max.	C°	<60*
pH-value	pH	5 - 9,5*

Flow rate	l/h	250
-----------	-----	-----



TB 500 UNIT VALUE

Dimensions

Length	mm	1440
Width	mm	580
Height	mm	1060

Suction capacity	l/min	8 - 16
Suction height	m	4
Temperature max.	C°	<60*
pH-value	pH	5 - 9,5*

Flow rate	l/h	500
-----------	-----	-----



TB 1000 UNIT VALUE

Dimensions

Length	mm	1000
Width	mm	560
Height	mm	1000

Suction capacity	l/min	16 - 32
Suction height	m	4
Temperature max.	C°	<60*
pH-value	pH	5 - 9,5*

Flow rate	l/h	1000
-----------	-----	------



TM 450 UV UNIT VALUE

Dimensions

Length	mm	1100
Width	mm	550
Height	mm	1115

Suction capacity	l/min	4 - 7,5
Suction height	m	3
Temperature max.	C°	<60*
pH-value	pH	5 - 9,5*

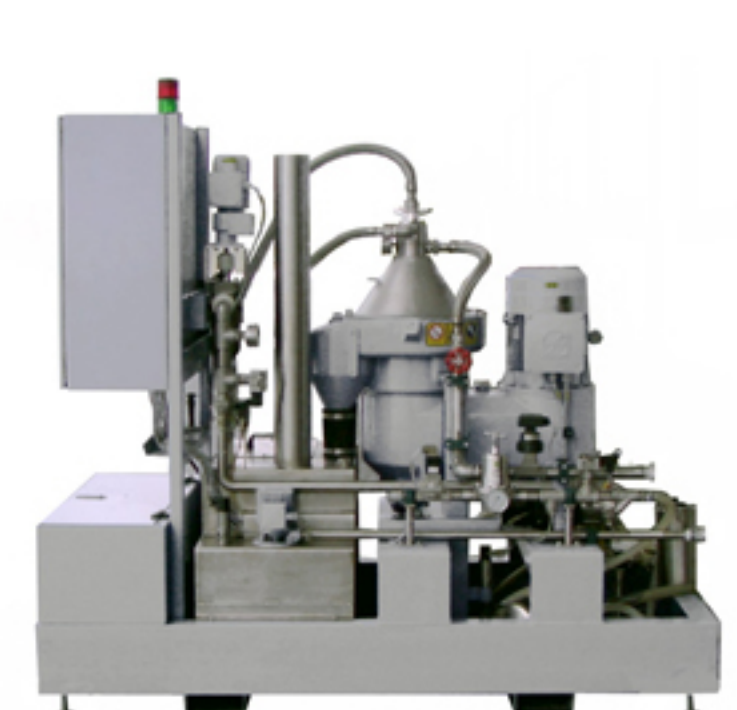
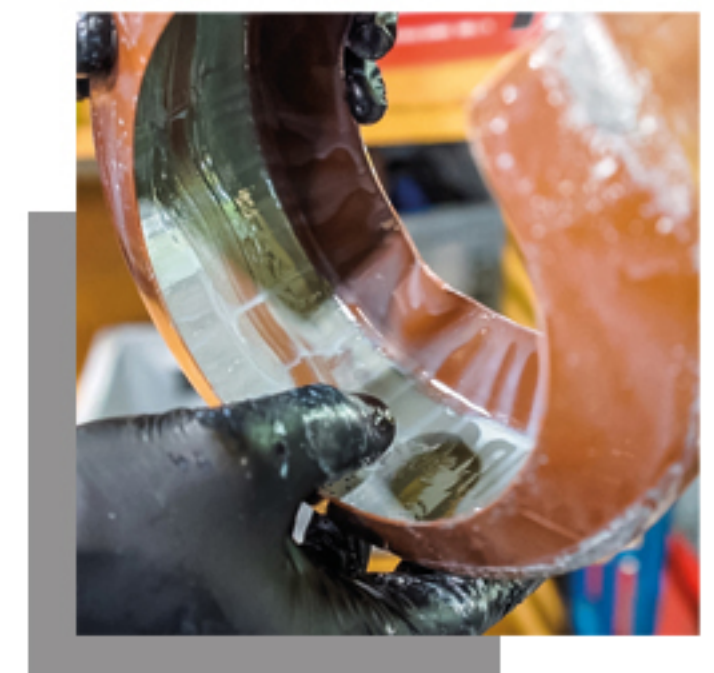
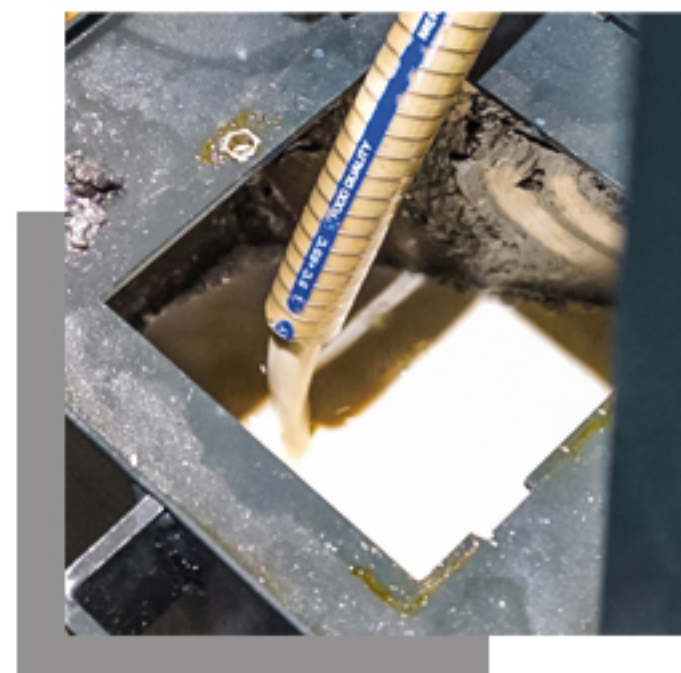
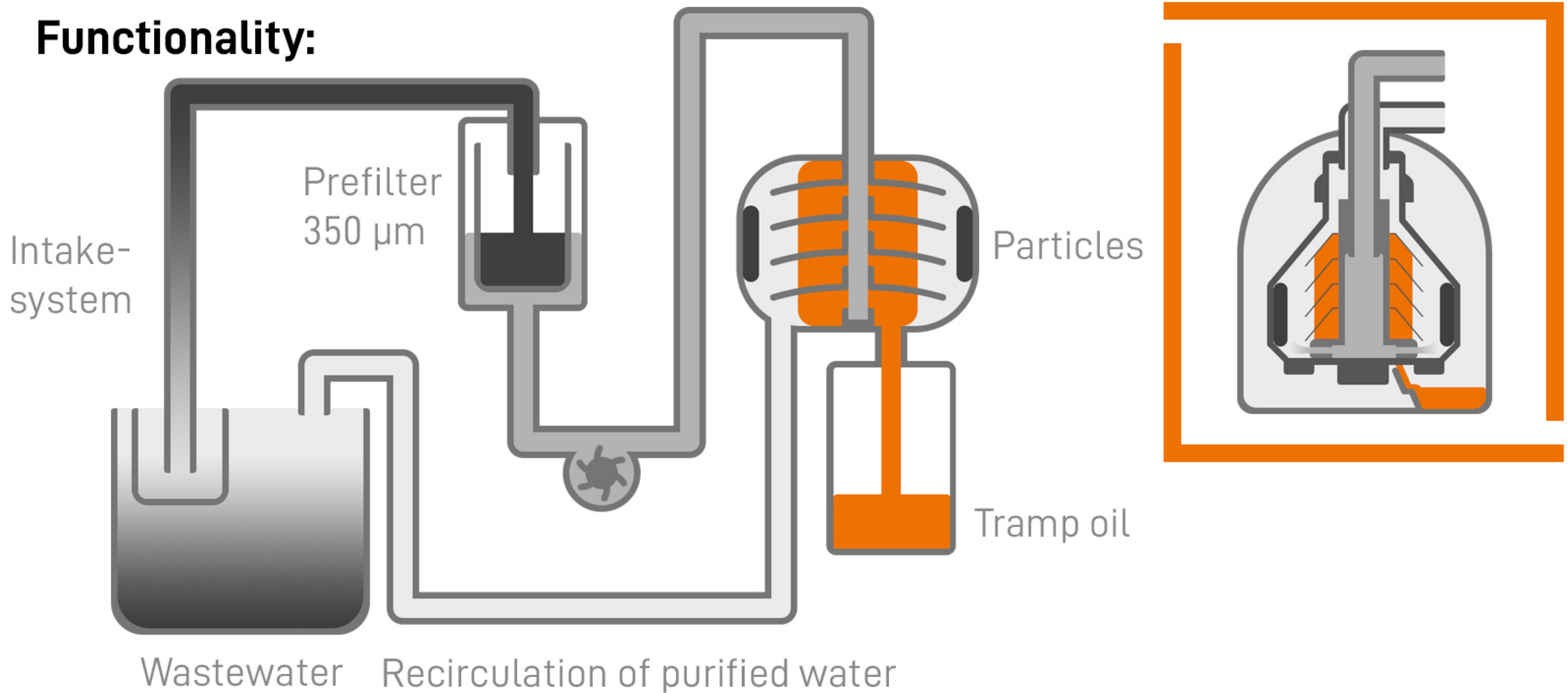
Flow rate	l/h	450
-----------	-----	-----

*higher values on request

Disk Stack Centrifuges

Disc centrifuges from MKR offer precise **cleaning of cooling lubricant materials, cutting oils and washing media in bypass mode**. Characterized by an impressive **ultra-fine filtration of up to 2 µm** and can also be used effectively after an upstream band filter.

Functionality:



OTC 350

Dimensions	UNIT	VALUE
Length	mm	660
Width	mm	600
Height	mm	1250

Suction capacity	l/min	5 - 10
Suction height	m	3
Temperature max.	C°	<60*
pH-value	pH	5 - 9,5*

Flow rate	l/h	300
-----------	-----	-----

OSE 500

Dimensions	UNIT	VALUE
Length	mm	1420
Width	mm	680
Height	mm	1500

Suction capacity	l/min	5 - 10
Suction height	m	3
Temperature max.	C°	<60*
pH-value	pH	5 - 9,5*

Flow rate	l/h	300
-----------	-----	-----

OSE 2000

Dimensions	UNIT	VALUE
Length	mm	1950
Width	mm	870
Height	mm	1600

Suction capacity	l/min	20 - 40
Suction height	m	3
Temperature max.	C°	<60*
pH-value	pH	5 - 9,5*

Flow rate	l/h	1500
-----------	-----	------

OSE 4000

Dimensions	UNIT	VALUE
Length	mm	2100
Width	mm	950
Height	mm	2050

Suction capacity	l/min	40 - 80
Suction height	m	3
Temperature max.	C°	<60*
pH-value	pH	5 - 9,5*

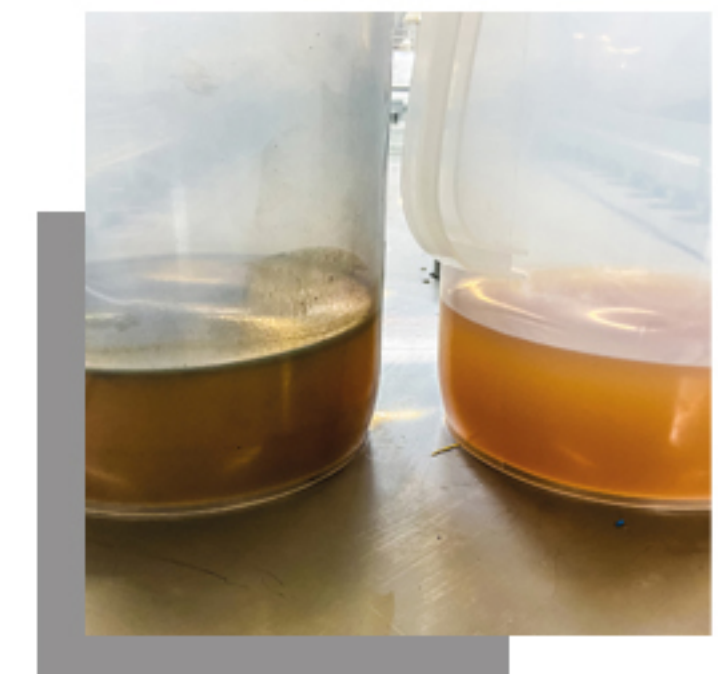
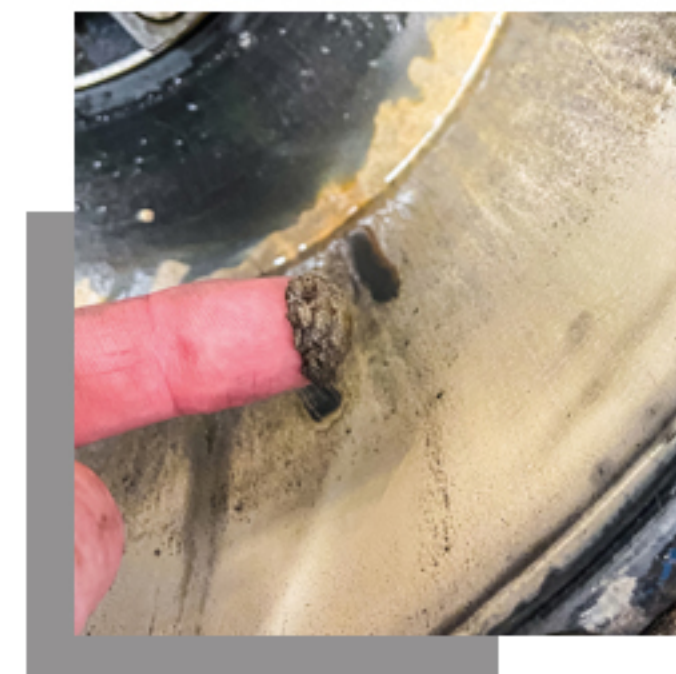
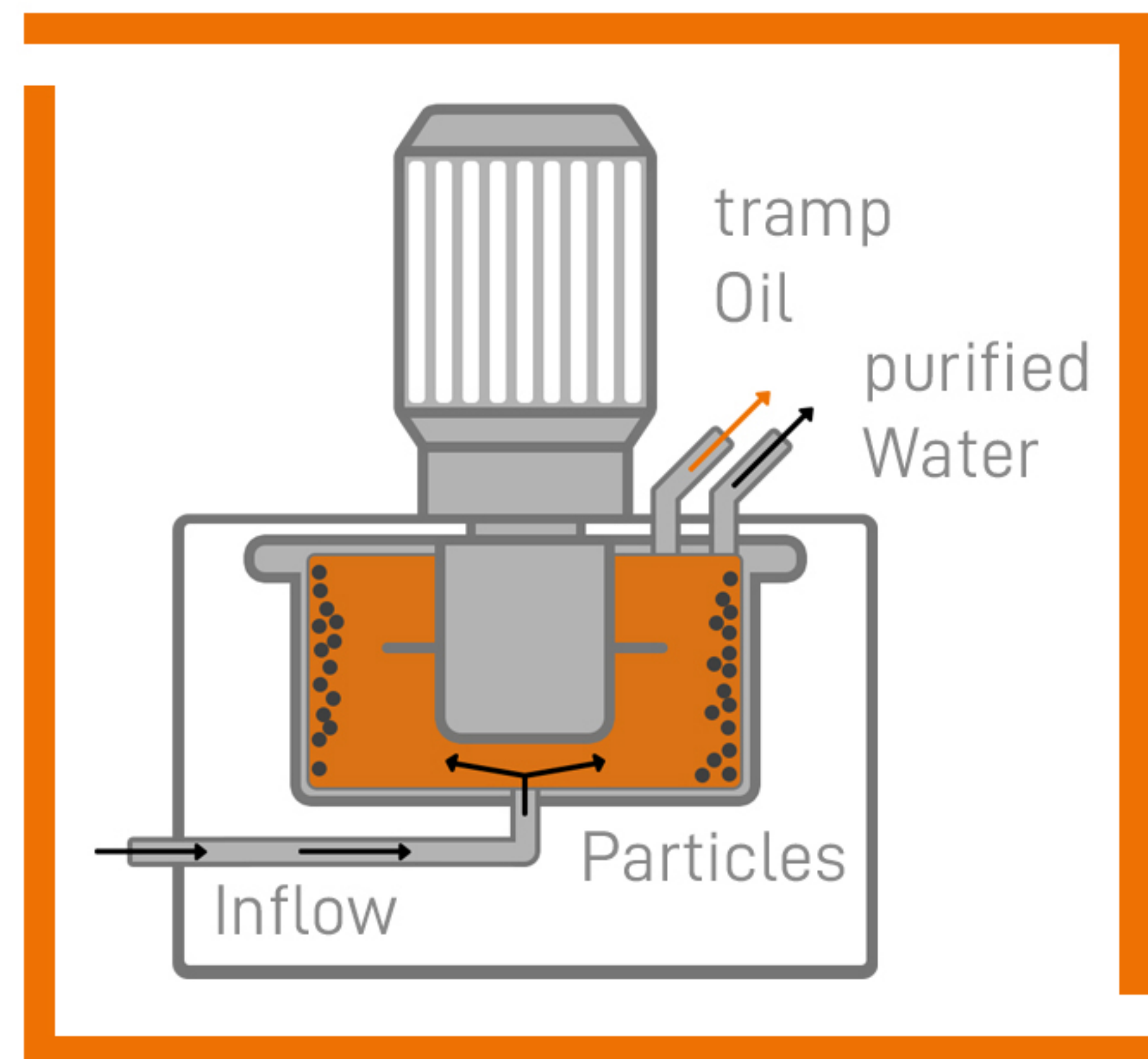
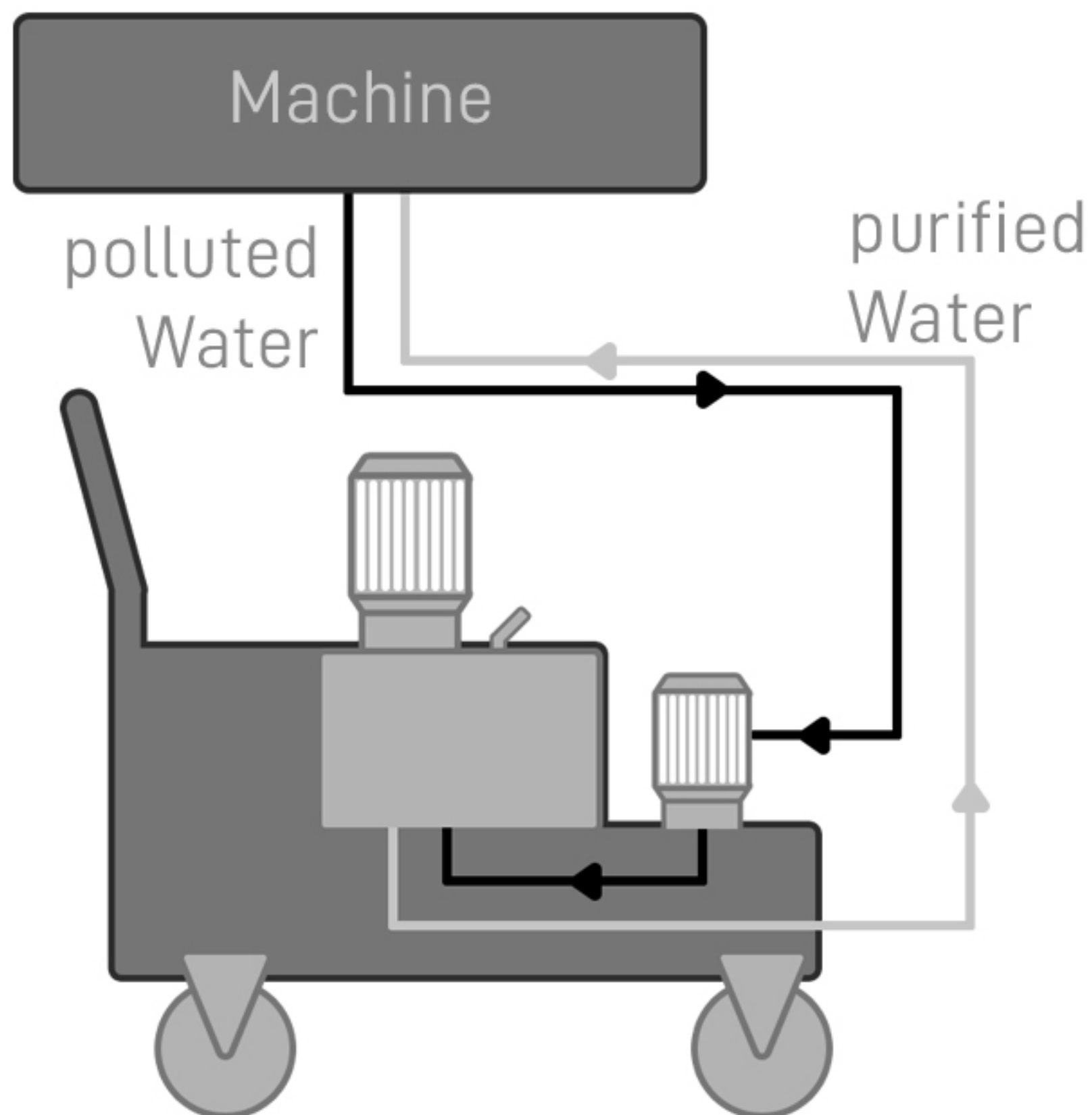
Flow rate	l/h	2500
-----------	-----	------

*higher values on request

Drum Centrifuges

So that production doesn't get stuck in the mud:
Drum centrifuges ensure a clear difference between solid and liquid.

Functionality:



T 700

Dimensions	UNIT	VALUE
Length	mm	1950
Width	mm	680
Height	mm	1450

Suction capacity	l/min	30
Suction height	m	3
Temperature max.	C°	<60*
pH-value	pH	5 - 9,5*

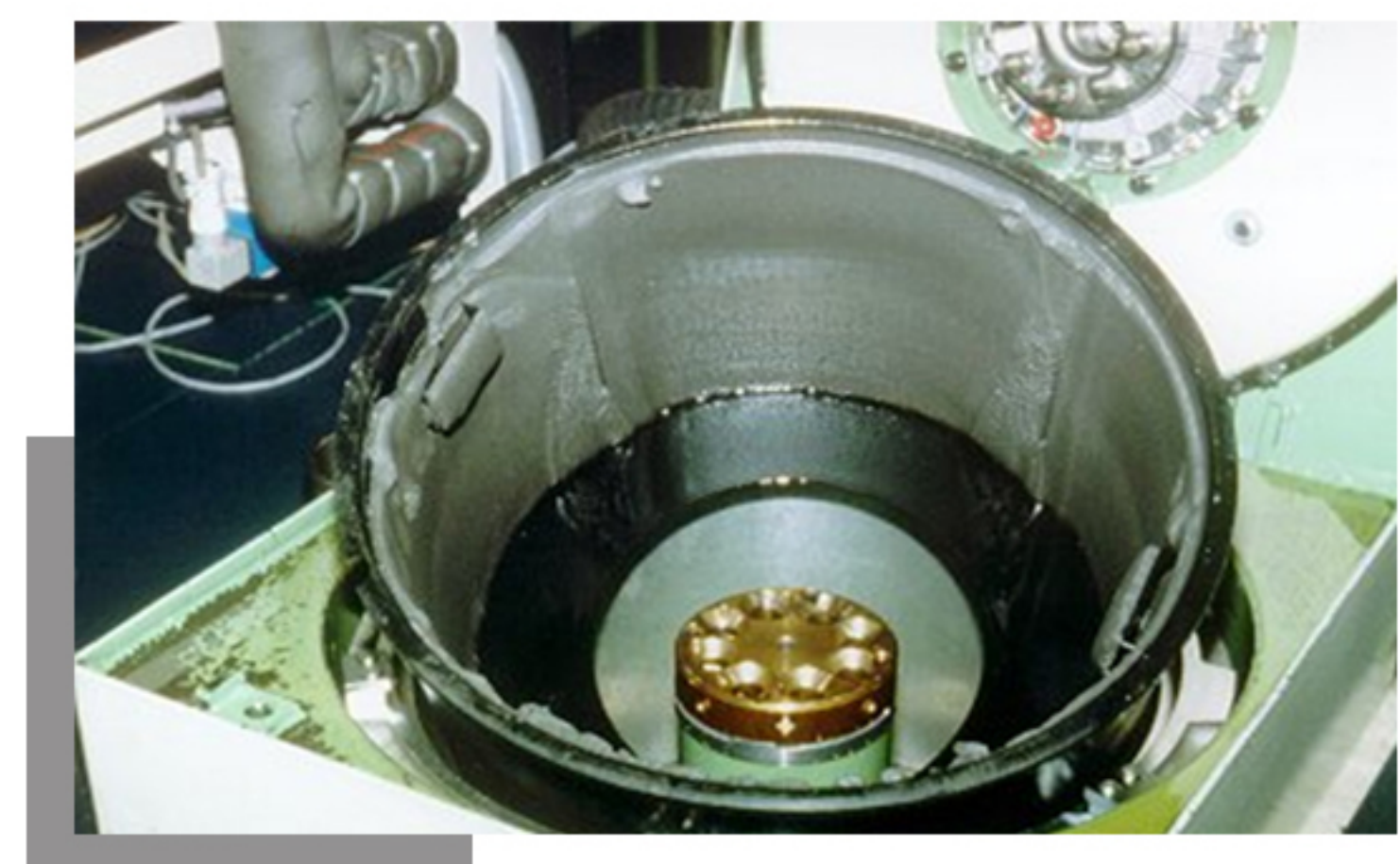
Flow rate	l/h	1800
-----------	-----	------

T 710

Dimensions	UNIT	VALUE
Length	mm	1650
Width	mm	650
Height	mm	1450

Suction capacity	l/min	30
Suction height	m	3
Temperature max.	C°	<60*
pH-value	pH	5 - 9,5*

Flow rate	l/h	1800
-----------	-----	------



*higher values on request

The success Story tradition becomes innovation.

Coolant treatment
Machine cleaning
Wastewater recycling
Washwater treatment



2023
ET MaXx ZLD
ET MaXx ZLD



2001
Fremdölabscheider
Tramp Oil Separator



1997
Verdampfer
Evaporator



1996
Ultrafiltration
Ultrafiltration



1992
Zentrifugen
Centrifuges



1990
Saug- und Filterwagen
Suction- and Filter Cart



cleaning
systems
for liquids

MKR Metzger GmbH
Recyclingsysteme
Rappenfeldstrasse 4
D-86653 Monheim
Tel +49 (0) 9091 50 00 0
Fax +49 (0) 9091 50 00 30

info@mkr-metzger.de
www.mkr-metzger.de

